

Hononegah Community High School Fieldhouse Renderings Unveiled

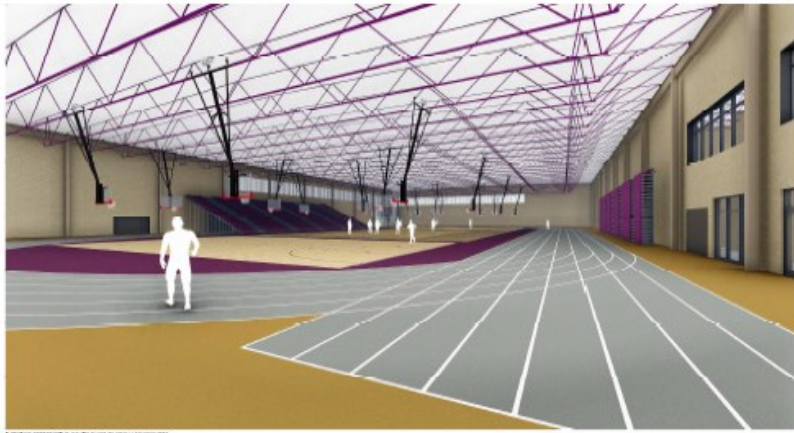


Conceptual renderings for Hononegah's proposed fieldhouse have been unveiled and illustrate how the structure would look on campus along with what features and amenities could be included. Should the referendum pass on April 4, schematic designs and construction documents, would be developed during a process that would include input from the community.

Please visit our website www.hononegah.org for information about the referendum and you can also follow us on Facebook @hononegahcommunityhighschool

Here are renderings of proposed fieldhouse.





INTERIOR PERSPECTIVE OF BENCHES FROM COURTNEY



INTERIOR PERSPECTIVE FROM MULTILEVEL ROOMS AND BENCHES



INTERIOR PERSPECTIVE OF BENCHES FROM STRUCTURE



INTERIOR PERSPECTIVE OF COURT CENTER



INTERIOR PERSPECTIVE OF COURT CENTER



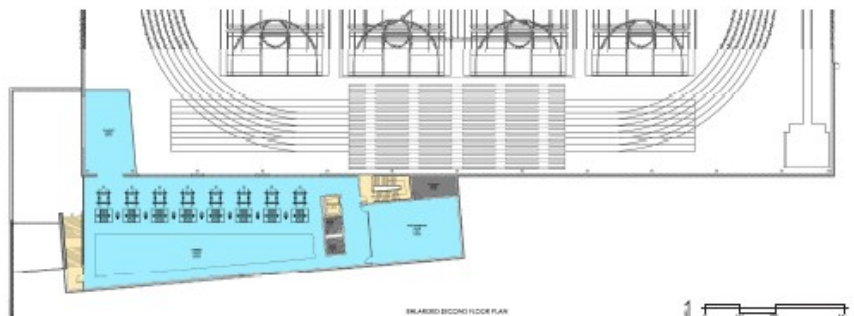
PROPOSED 1ST FLOOR PLAN



PROPOSED 2ND FLOOR PLAN



PROPOSED 2ND FLOOR PLAN



PROPOSED 2ND FLOOR PLAN



- P.F. (PROPOSED FLOOR PLAN)
- SUPPORT SPACE TO BE BUILT
- COURT CENTER
- COURT CENTER (EXISTING)
- SPACE TO BE RECONFIGURED
- OUT OF COURT SPACE
- COURT CENTER